

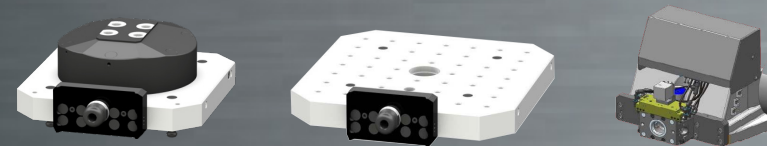
# HS flex hybrid

YOUR SOLUTION FOR LIGHTS-OUT PRODUCTION

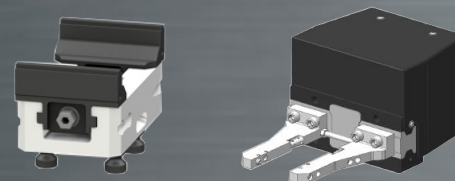


- AUTOMATED PALLET AND VISE HANDLING
- UPMOST FLEXIBILITY FOR SMALL TO LARGE PARTS
- MAXIMIZING STORAGE SPACE = MAXIMUM UNMANNED RUN-TIME
- ALL-IN-ONE HERMLE SOLUTION:
  - SINGLE SOURCE
  - ATTRACTIVE LEAD TIME
  - ATTRACTIVE PRICE

## ➤ CLAMPING INTERFACE 1



## ➤ CLAMPING INTERFACE 2



DISCOVER MORE AT  
[HERMLEUSA.NET/HS-FLEX-HYBRID](https://hermleusa.net/hs-flex-hybrid)

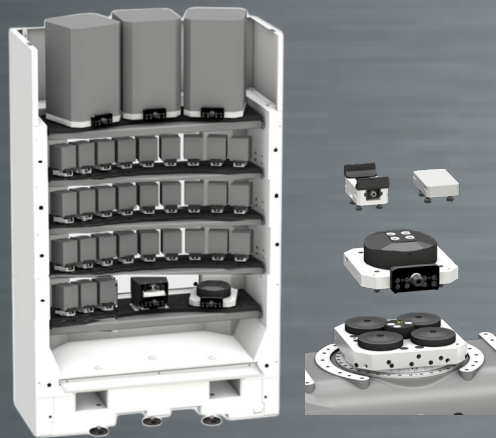
# HS flex hybrid

YOUR SOLUTION FOR LIGHTS-OUT PRODUCTION



## C 250 HS flex hybrid

### PACKAGE

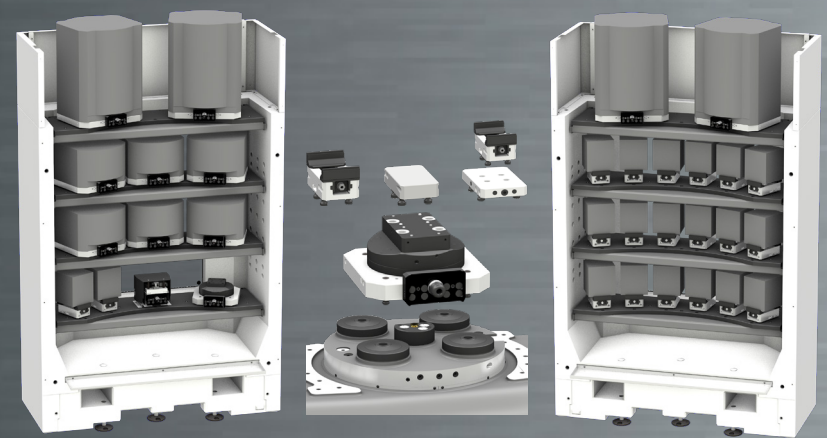


### STORAGE MODULE

- 3x PALLETS (UP TO 300kg / 661.3lbs)  
400 x 400mm / 15.7 x 15.7in
- 30x LANG  
MAKRO GRIP 77 VISES (UP TO 30kg / 66lbs)
- 1x ADAPTER PALLET AND GRIPPER  
FOR LANG VISES

## C 400 HS flex hybrid

### PACKAGE



### STORAGE MODULES

- 4x PALLETS (UP TO 450kg / 992lbs)  
500 x 400mm / 19.6 x 15.7in
- 6x PALLETS (UP TO 450kg / 992lbs)  
400 x 400mm / 15.7 x 15.7in
- 20x LANG  
MAKRO GRIP 125 VISES (UP TO 50kg / 110lbs)
- 1x ADAPTER PALLET AND GRIPPER  
FOR LANG VISES